



Truck Parking and Medium Duty/Heavy Duty (MD/HD) Zero Emission Vehicle (ZEV) Charging Stations

CARB Ride and Drive

Maggie Nunez & Christina Ngo

April 29, 2026



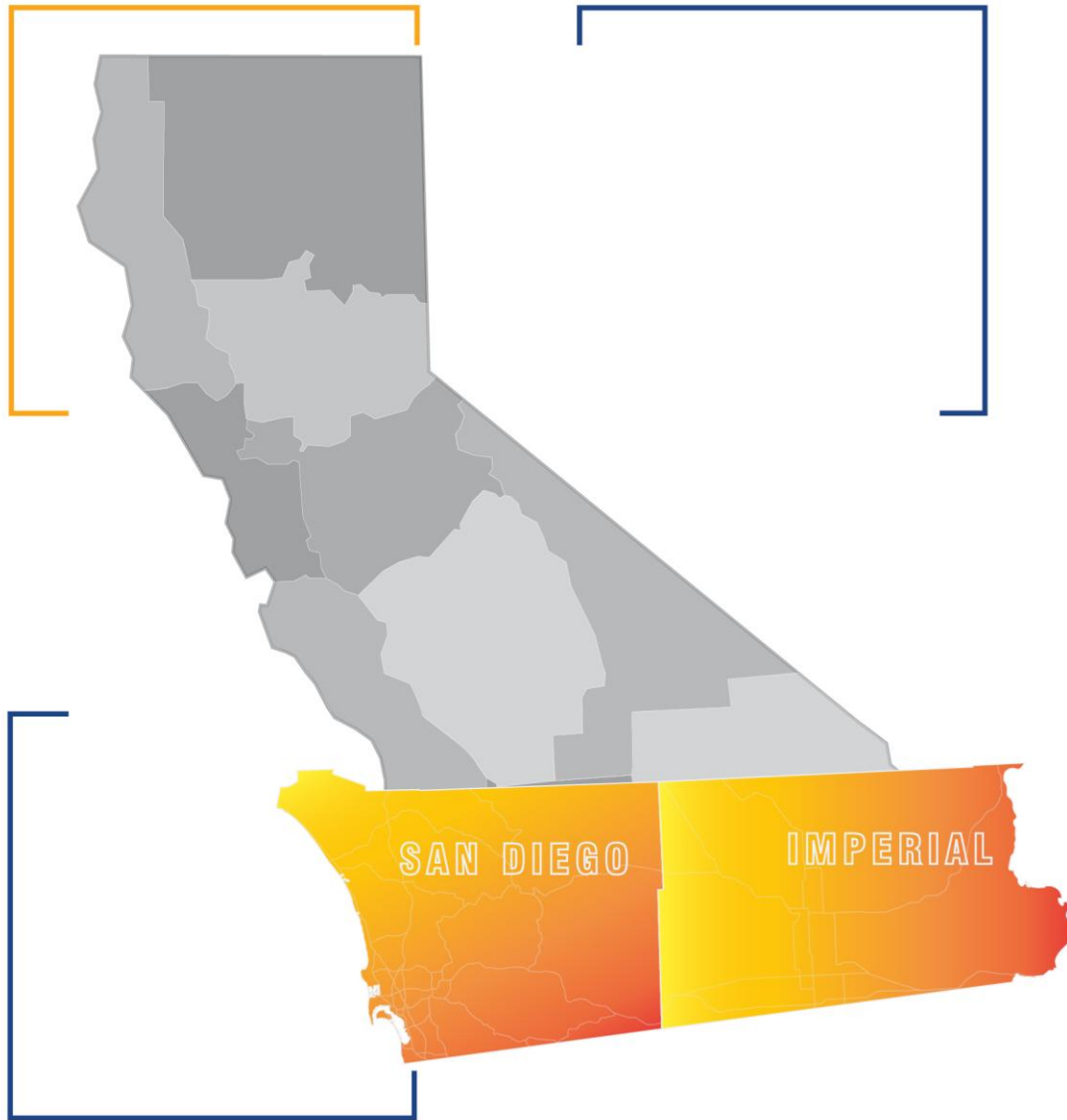
CALIFORNIA DEPARTMENT OF TRANSPORTATION

- Plan, Design, Build, Maintain and Operate California's Transportation System
- Responsible for Over 50,000 Highway Lane Miles and 12,000 Bridges
- Partner and Provide Technical Assistance
- Provide State, Federal Formula, and Grant Funding
- Oversee Aeronautics and Mass Transit, Including Over 400 Public Airports, Inter-City Rail, and Amtrak



SAN DIEGO & IMPERIAL COUNTIES

- 1,300 Employees
- 1,100 Centerline Miles / 4,400 Lane Miles
- 25 Cities
- 20 Tribal Nations
- 7 Border Crossings
- 3.4 Million People
- LOSSAN Rail Corridor
- Pacific Ocean to Arizona / Mexico Border to Orange & Riverside Counties



IMPROVING LIVES AND COMMUNITIES THROUGH TRANSPORTATION

Safety

Equity

Prosperity

Climate Action



IMPROVING LIVES AND COMMUNITIES THROUGH TRANSPORTATION

Safety

Equity

Climate Action

Prosperity

Employee Excellence



Project Overview

Purpose:

- Add truck parking stalls in existing lots and construct designated truck parking lots
- Install ZEV charging/hydrogen fueling stations for MD/HD trucks
- Install truck parking signage along freeways

Need:

- Shortage of truck parking throughout the State
- Governor Newsom signed EO N-27-25, which reaffirms the actions directed in EO N-79-20, to transition the State to 100% MD/HD ZEV by 2045 for all operations where feasible, and 100% zero-emission drayage trucks by 2035

Project Initiation Alternatives

	County	Site #	Post Mile	Location Description	Proposed Work	Total Area (Acres)	Approx. # of Proposed Parking Spaces	Approx. # of Proposed ZEV Chargers (Dual-port)
1	SD	5-29	59.609	SB Aliso Creek Rest Area	Add MD/HD Truck ZEV Charging and expand existing parking lot to add truck parking	3.1	6	8
2	SD	15-04	R46.35	Park and Ride I-15/SR-76 Pala Rd	Add MD/HD Truck ZEV Charging at existing parking	4.3	0	4
3	SD	805-01	3.60	Main St and Auto Park Ave	Add a new Truck Parking lot and MD/HD Truck ZEV Charging	5.53	60-80	8
4	SD	805-03	8.65	Westfield Plaza Bonita	Add MD/HD Truck ZEV Charging at existing parking	3.3	39-59	10
5	SD	805-09	23.15	I-805/SR-52 at Copley Dr	Add a new Truck Parking lot and MD/HD Truck ZEV Charging	21.2	193-243	11
6	SD	905-03	R6.60	Park and Ride/Field Office Caliente Ave	Add MD/HD Truck ZEV Charging and expand existing parking lot to add truck parking	7.41	28-48	10
7	SD	905-07	R11.60	Siempre Viva Rd CVEF	Add a new Truck Parking lot and MD/HD Truck ZEV Charging	25	302-352	5
8	SD	905-08	R10.70	Otay Mesa Rd and Harvest Rd	Add a new Truck Parking lot and MD/HD Truck ZEV Charging	9.4	79-59	8
9	SD	8-03	R61.65	Golden Acom Casino & Travel Center	Add MD/HD Truck ZEV Charging at existing parking	11.2	0	3



Project Initiation Alternatives

	County	Site #	Post Mile	Location Description	Proposed Work	Total Area (Acres)	Approx. # of Proposed Parking Spaces	Approx. # of Proposed ZEV Chargers (Dual-port)
10	IMP	8-10	R90.63	Quechan Casino Resort	Add a new Truck Parking lot and MD/HD Truck ZEV Charging	4.5	60	4
11	IMP	7-01	0.25	Calexico East POE near UETA Duty Free	Add a new Truck Parking lot and MD/HD Truck ZEV Charging	8.28	49-69	6
12	IMP	7-02	0.50	Maggio Rd	Add a new Truck Parking lot and MD/HD Truck ZEV Charging	8.6	81-101	3
13	IMP	7-03	1.20	SR-98 Northeast Quadrant	Add a new Truck Parking lot and MD/HD Truck ZEV Charging	19.8	175-225	1
14	IMP	111-01	R1.95	Scaroni Ave and Weakley St	Add a new Truck Parking lot and MD/HD Truck ZEV Charging	3.7	27-37	3
15	IMP	111-02	R21.50	SR-111/SR-78 Southwest Quadrant	Add a new Truck Parking lot and MD/HD Truck ZEV Charging	27	235-285	2

Site 5-29 – Aliso Creek Rest Area



Site 15-04 – Park & Ride at I-15/SR-76



Site 805-01 – Main St



Site 805-03 – Westfield Plaza Bonita



Site 805-09 – Copley Dr



Site 905-03 – Park & Ride at SR-905/Caliente Ave



Site 905-07 – Siempre Viva Rd at Otay Mesa CVEF



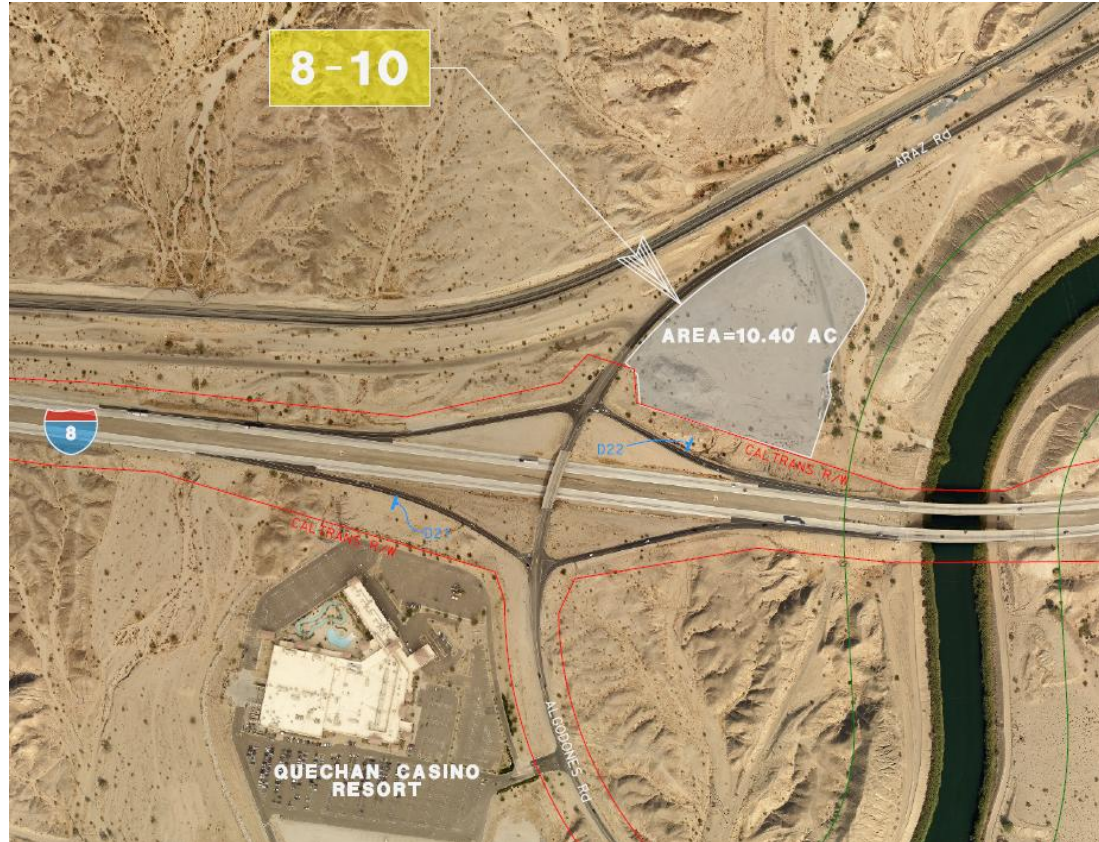
Site 905-08 – Otay Mesa Rd/Harvest Rd



Site 8-03 – Golden Acorn Casino



Site 8-10 – Quechan Casino Resort



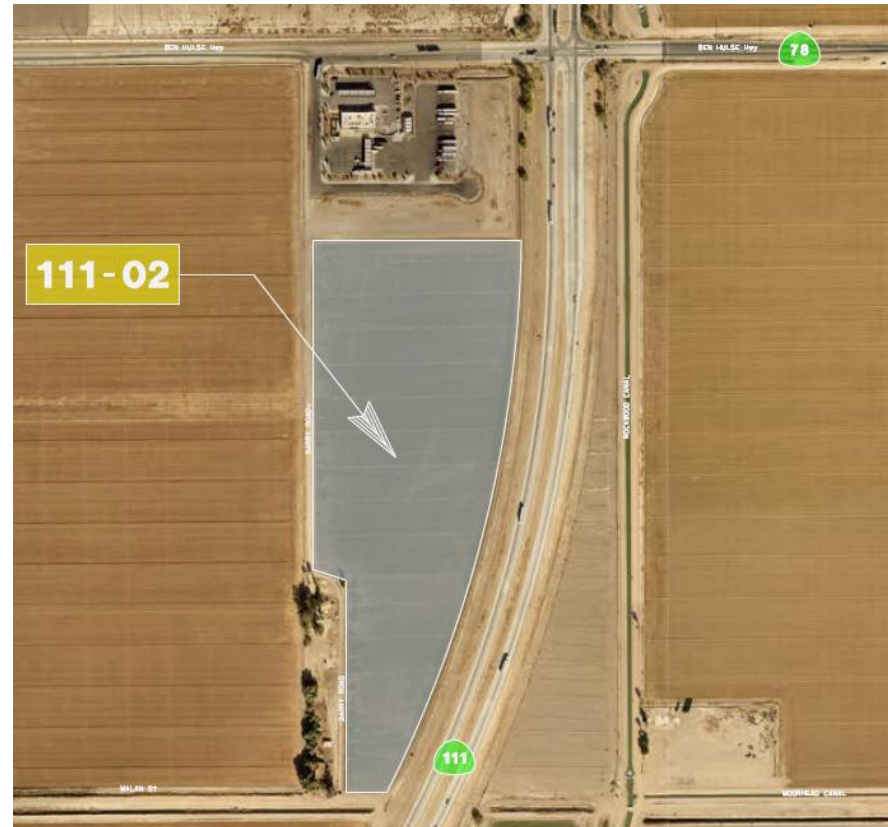
Sites 7-01 and 7-02 – Calexico East POE



Site 111-01 – Scaroni Ave/Weakley St



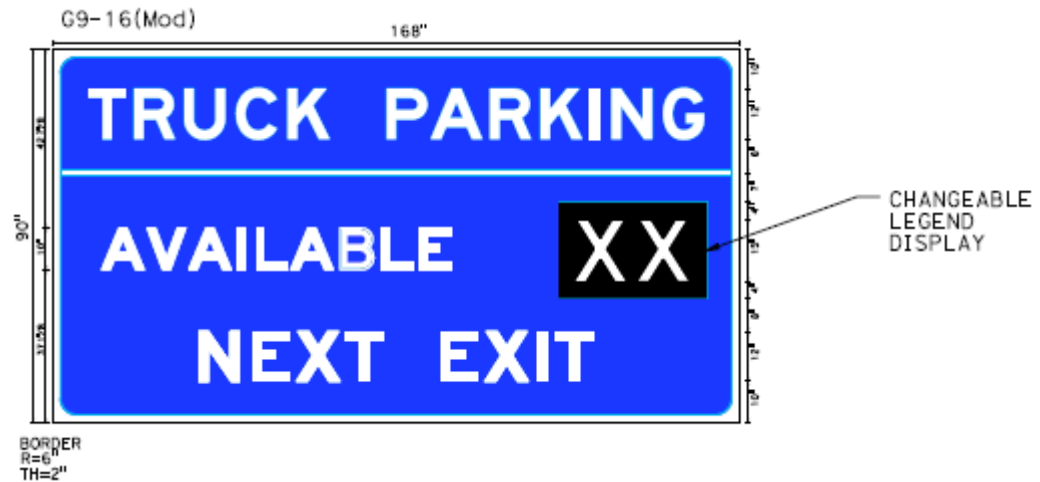
Site 111-02 – SR-111/SR-78



Example – Chargers at TruckNet



Example - Hybrid CMS and Parking Occupancy Sensor



Schedule

Milestone	Date
Approve PID	June 2026
Begin Environmental	Mar 2027
Project Approval & Environmental Document	Sept 2028
Begin Design	Oct 2028
Ready to List	Nov 2030
Begin Construction	May 2031
End Construction	July 2034

THANK YOU!

CONTACT US

 (619) 688-6670

 CT.Public.Information.D11@dot.ca.gov

FOLLOW US

 @CaltransDistrict11   @SDCaltrans   @D11Caltrans

SUBMIT A CUSTOMER SERVICE REQUEST

[CSR.DOT.CA.GOV](https://www.dot.ca.gov/CSR)

REAL-TIME TRAFFIC INFORMATION

[QUICKMAP.DOT.CA.GOV](https://www.dot.ca.gov/QUICKMAP)

Margarita Nunez, Project Manager margarita.nunez@dot.ca.gov

Jose Luis Robles, Design Manager Jose.luis.robles@dot.ca.gov

Christina Ngo, Project Engineer Christina.ngo@dot.ca.gov

[WWW.DOT.CA.GOV](https://www.dot.ca.gov)

