



Harbor Trucking Association

**Port to Pavement: Real-World
Insights on ZEV Adoption**

Pachanga Arena, San Diego, CA

Robert Loya, CEO





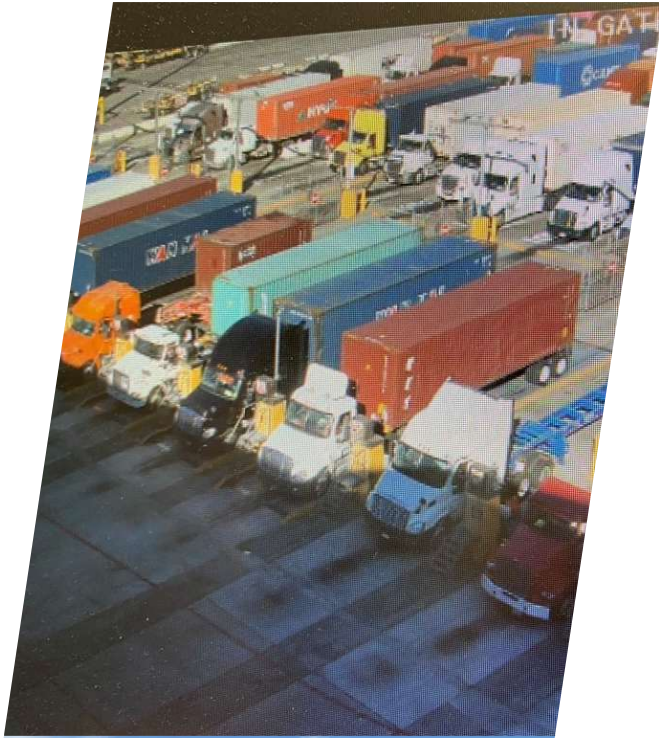
Robert Loya ✓

Chief Executive Officer at Harbor Trucking Association

Los Angeles Metropolitan Area · [Contact info](#)

 Harbor Trucking Association

 University of Denver



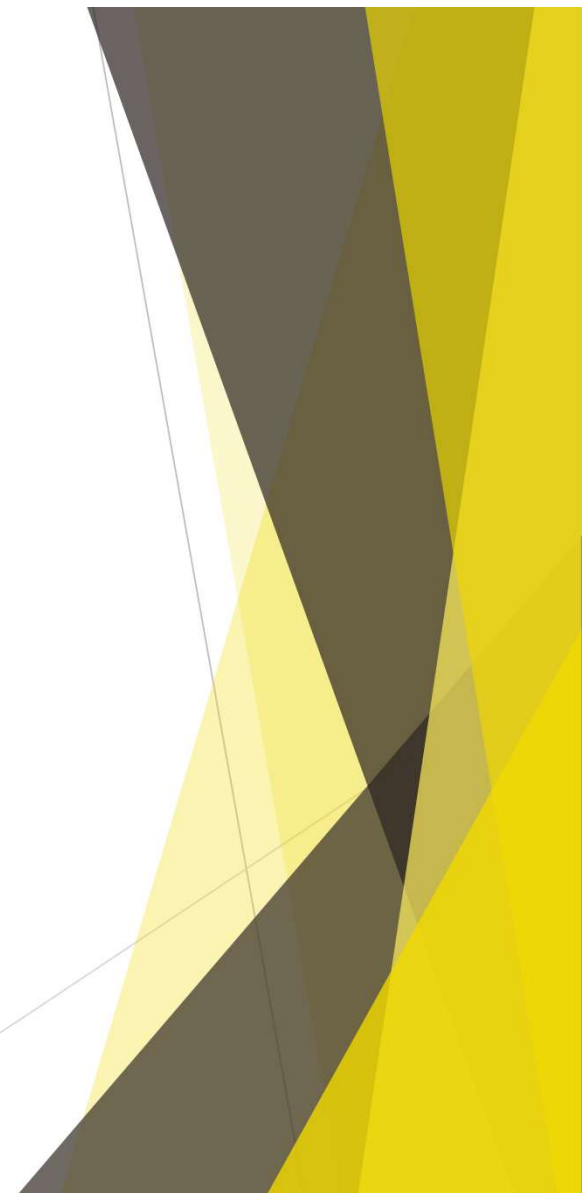
Overview

- ▶ Setting the Stage
- ▶ Panel Introduction
- ▶ Discussion
- ▶ Questions



Panel Guests

- ▶ Philip Gibbons
 - ▶ Port of San Diego
 - ▶ Deputy Director, Climate and Sustainability
- ▶ John Friedrich
 - ▶ Skycharger
 - ▶ Chief Development Officer
- ▶ Matt Schrap
 - ▶ Forum Mobility
 - ▶ Chief Commercial Officer (CCO)

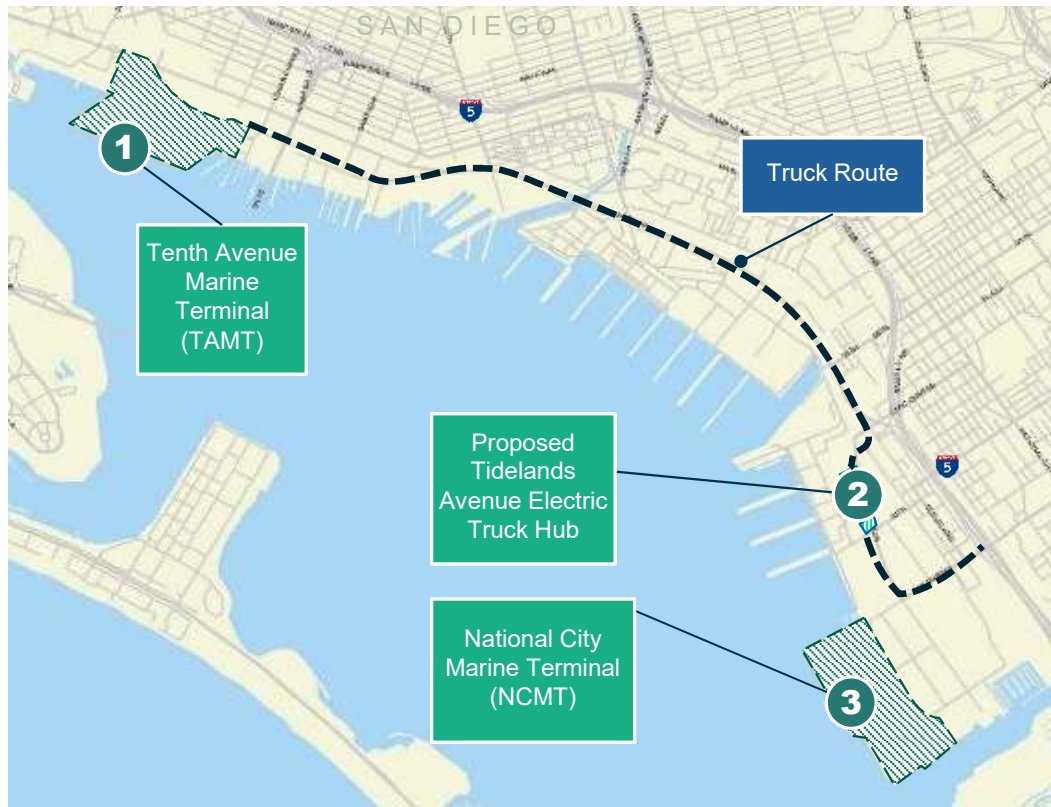




Phil Gibbons
Deputy Director,
Climate & Sustainability
pgibbons@portofsandiego.org



Port of San Diego Equipment and Infrastructure



1. Tenth Avenue Marine Terminal

- Terminal EVSE
- ZE Cargo Handling Equipment
- Shore Power Outlets for Ships and Harbor Craft
- Microgrid with Solar and Battery Storage

2. Proposed: Tidelands Avenue Electric Truck Hub

- Skycharger
- Tidelands Avenue and 19th St. in National City
- 70 Charging Points
- Along Truck Route
- Trucking As a Service
- Solar and Battery Storage

3. National City Marine Terminal

- Terminal EVSE
- ZE Medium-Duty Vans
- ZE Cargo Handling Equipment
- Shore Power Outlets



PORT of
SAN DIEGO

**Maritime Stakeholder Forum
March 25, 2026**

**Tidelands Ave
Electric Truck Hub
Presentation**





Charging for Zero Emissions Trucks

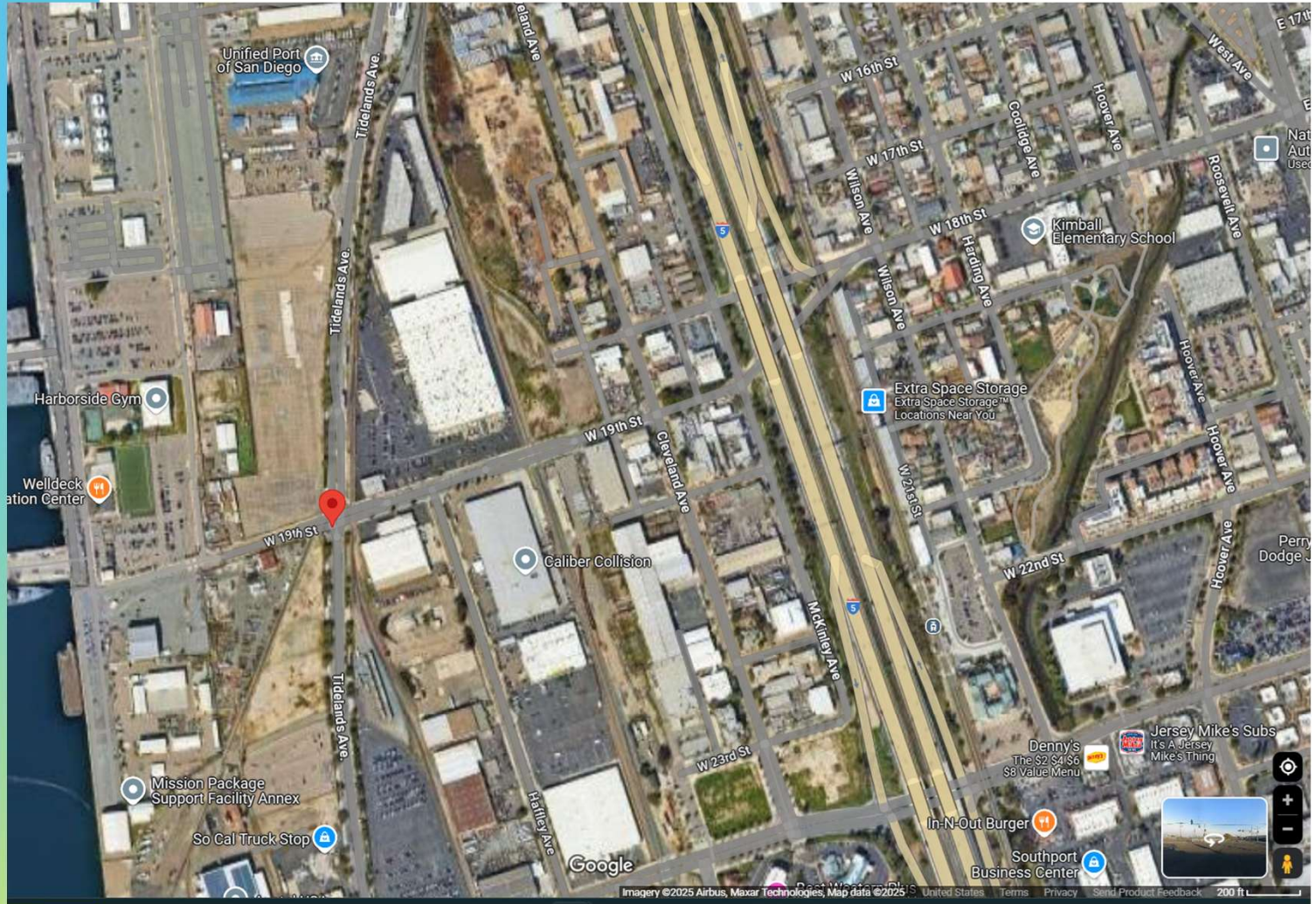
- Skycharger - Who we are
- 13 years of experience creating a premium charging experience for EV drivers
- Relevant Calif. project experience:
 - West Coast Electric Highway
 - PepsiCo LA Mega Facility
 - SFO EV Hub
 - Electric truck charging

Zero Emission Truck Goals



- **100%** zero emission truck trips at marine cargo terminals by **2030**
- Facilitate the deployment of infrastructure to support the transition to zero emission truck trips by **2026**

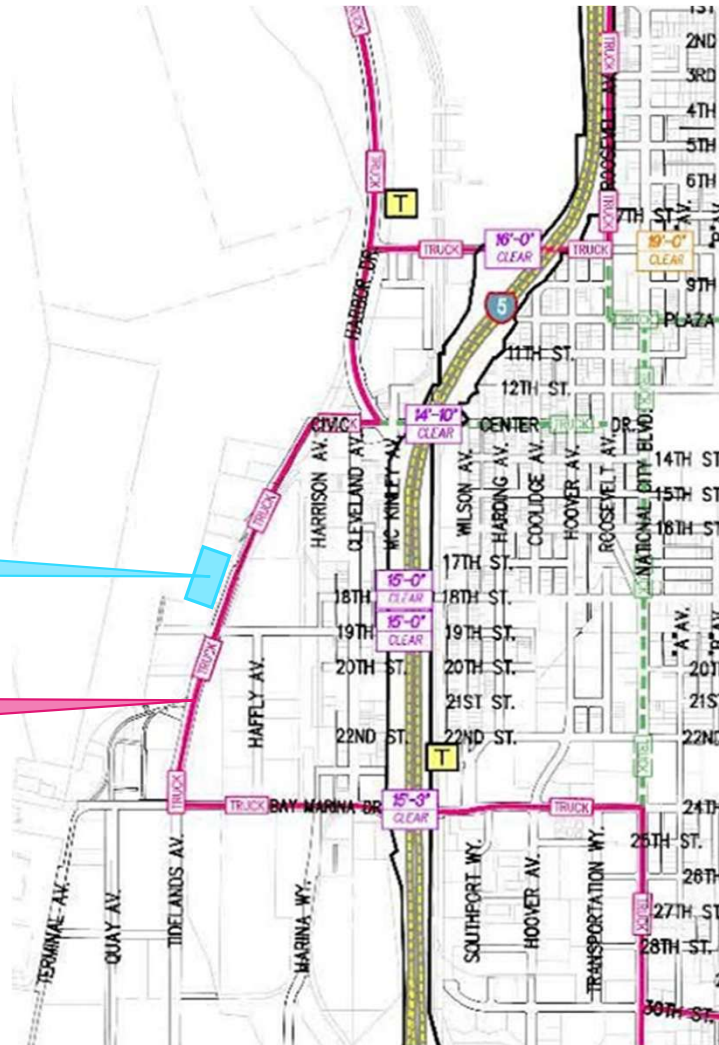
Location



Location, Traffic & Truck Route

ZEV Truck Hub

Primary Truck Route



Source: City of National City, Designated Truck Routes

SITE AMENITIES

Convenience store with bathrooms

Picnic tables

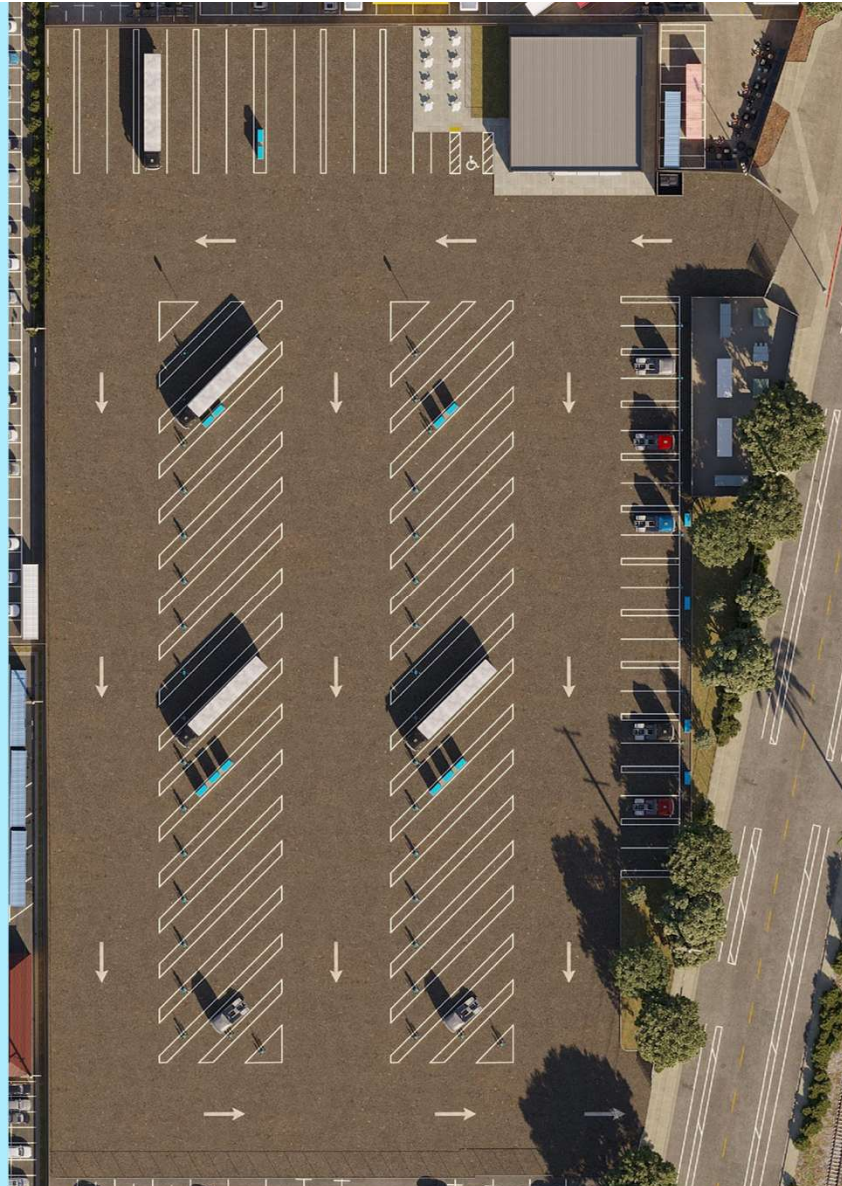
Pedestrian walkway provides street access to the store

Showers for registered users

WiFi throughout the site

Local artscape to line exterior and interior walls

Gated site that is well-lighted and has security cameras throughout



TECHNICAL AMENITIES

Dedicated entrance and exit for ease of ingress and egress

46 overnight charging ports can service tractors or tractors with trailers

24 opportunity chargers with very high charging speeds

Electrical equipment hidden from view, convenient for service

Solar canopies to supplement power from the grid

Fueled with Clean Energy

- A solar array with a battery system for charging
 - Puts less pressure on the grid for supply
 - Battery to store excess clean energy for trucks
- This is a truck charging station – NOT a battery storage facility
- Solar and battery will meet all national fire protection standards, safety codes, certification and testing, and National City Fire Department guidance
- Collaborating with Fire Dept. on preparedness in the event of an emergency



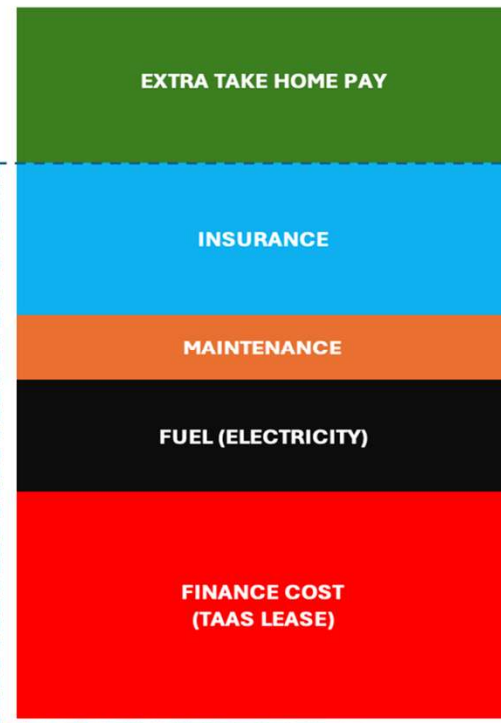
Trucking as a Service - Affordable Electric Trucks for All



**Electric Truck
as a Service**



Diesel Truck



Note: All electric truck costs will be combined into Skycharger's Electric Truck as a Service (TaaS) agreement

EHub Community-Wide Services



Clean Air Benefits

Electric trucks eliminate diesel emissions-like nitrogen oxides and particulate matter - improving air quality for National City and nearby areas while advancing zero-emission technology, expanding clean truck use, and promoting clean-air solutions such as battery energy storage (BESS).



Clean Energy Goals

The EHub supports the Port of San Diego's goal of 100% zero-emission trucking by 2030, aimed at reducing pollution at the source.



Noise Pollution Reduction

Electric trucks are about 33% quieter than diesel trucks - noticeably reducing noise pollution in the community.



Local Jobs

Immediate benefits include hiring local labor for construction and operations, along with workforce training in solar, electrical, and related work.



Economic Impact

The "Trucking as a Service" program helps independent drivers and small fleets affordably lease electric trucks, with options to own. The EHub project will also support local programs through a new community fund.



New Green Space

The EHub adds landscaped green areas and a picnic spot, turning a paved lot into a welcoming environment.

Next steps + Ways to Engage

- ❖ Complete CEQA/Environmental Impact Report process
- ❖ Finalize TaaS program offering and sign up truckers
- ❖ Port Commission vote on Final EIR and lease
 - Summer 2026
- ❖ Project construction & operation
 - Spring 2027



Next steps + Ways to Engage

- ❖ Complete CEQA/Environmental Impact Report process
- ❖ Finalize TaaS program offering and sign up truckers
- ❖ Port Commission vote on Final EIR and lease
 - Summer 2026
- ❖ Project construction & operation
 - Spring 2027



Thank you!

skycharger.com/zev-truck-hub





Port to Pavement: Real-World Insights on ZEV Adoption

CalStart Ride and Drive
San Diego, CA
April 2026



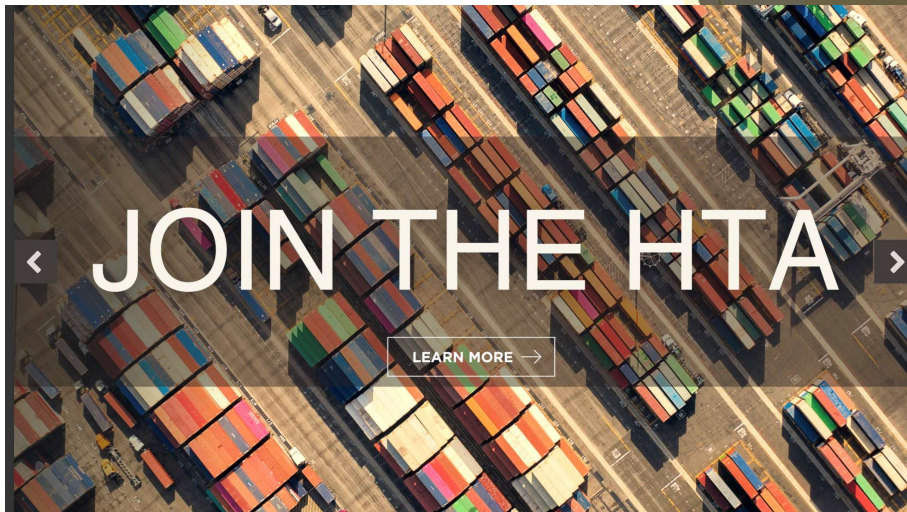
Matt Schrap

Chief Commercial Officer

Matt.Schrap@forummobility.com

www.forummobility.com





Robert Loya

robert@harbortruckers.org

[@harbortruckers](https://www.instagram.com/harbortruckers)

