

Helix Water District

Operations Center Electrification Project

Joe Garuba
Facilities Manager



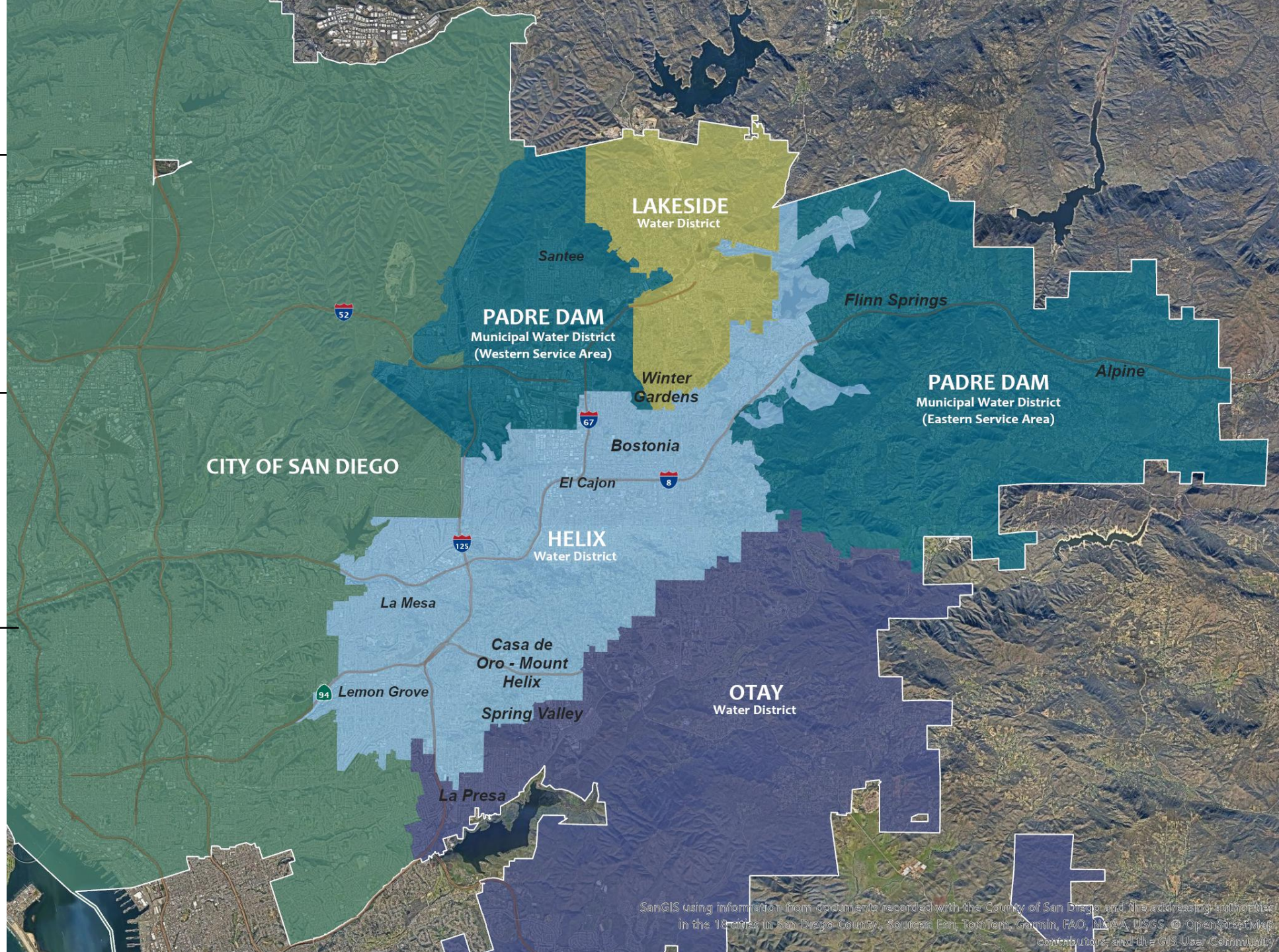
About Us

500,000

Population served
by treatment plant

279,000

Population served
by distribution system



**Sustainability and
financial responsibility
go hand in hand.**

Helix Board

It's when, not if.

Helix General Manager



A white Helix Water District truck is the central focus, parked on a street. The truck has the Helix Water District logo on the door, which includes a stylized blue and white 'H' and the text 'Helix WATER DISTRICT' and 'Setting standards of excellence in public service'. Below the logo is a 'CERTIFIED CLEANWATER 2015' seal. The license plate area shows 'CA 102644'. In the background, a yellow excavator is visible, and a worker in a safety vest is standing near some plants. The scene is outdoors with trees and a cloudy sky.

It's all in the planning

- We planned for two years
- Only you know your operations
- Every scenario



Meet with your electric utility

- Their capacity vs. your demand
- Get in line

100 Vehicles

Skip loaders

Backhoes

3-axle dump trucks

International crew cabs

F150 – F750 pickups



A photograph of a utility site. In the foreground, a white utility truck is parked, with a white trailer attached to its back. The trailer is loaded with various equipment, including a blue portable toilet, orange traffic cones, and other tools. The truck and trailer are parked under a large, dark, overhanging structure, possibly a covered walkway or a large building. In the background, there are trees and a cloudy sky. A large blue circular graphic is overlaid on the left side of the image, containing text.

Core Operational Requirements

24/7 emergency response

Power take-offs

No additional vehicles

Limited “peak hour” charging

The image shows a truck with a white cab and a grey utility body parked under a large, grey metal structure. This structure is an overhead charging station. It features three charging units, each with a white and blue face and a green light at the top. Black charging cables are coiled and suspended from the units. The truck's body is equipped with various tools and equipment, including a red fire extinguisher, a yellow container, and a large metal tank. The background shows a clear sky and some distant buildings.

Overhead chargers



640kw

**High-speed chargers
by Autel**

**Will charge a truck
in an hour**

Backup power



87

High-speed chargers

40-640 kilowatts

Heliox and Autel

5.9 Megawatt system

BetterFleet software recognizes vehicles and optimizes charging



A row of eight tall, light grey electrical cabinets with blue accents, labeled 'heliox' and 'FLEX 180'. Each cabinet has a yellow label with a letter: S, R, Q, P, N, M, L. They are mounted on a concrete base with yellow bollards in front. The background shows a white building and power lines under a clear blue sky.

Build a regional charging hub

Will be needed
Cost efficient
May attract grants

Thank you

Operations Center Electrification Project

Joe Garuba
Facilities Manager

